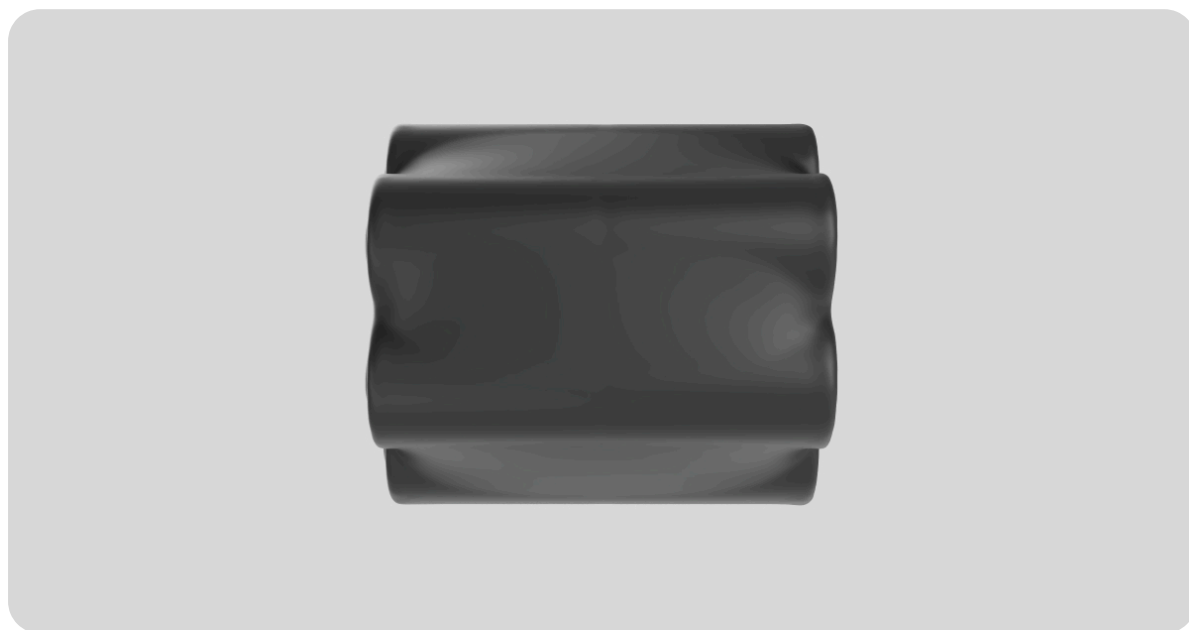


Internal battery NB (7.2V/95Ah) user manual

Updated November 26, 2025



Internal battery NB (7.2V/95Ah) is a non-rechargeable lithium thionyl chloride battery for powering the hub. The battery's parameters can be set in the hub settings in [Ajax PRO apps](#).

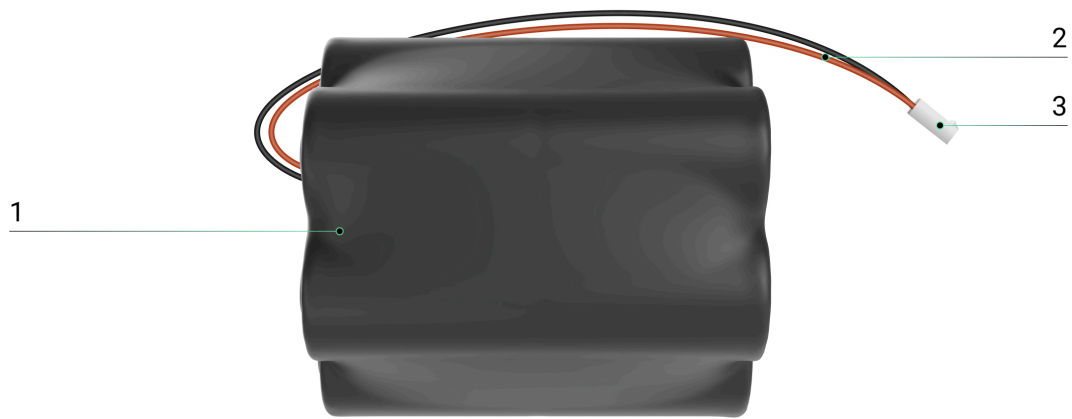


[Buy Internal battery NB \(7.2V/95Ah\)](#)



[Buy Hub BP Jeweller](#)

Functional elements



1. Battery.
2. Cable.
3. Connector for attaching the battery to the hub.

Compatible hubs

A compatible Ajax hub is required for the battery to operate.

The device is compatible with the following hub:

- Hub BP Jeweller

Operating principle

Internal battery NB (7.2V/95Ah) is an internal battery used to power the hub. It can power the hub both independently and as a backup power source when an external battery is used.

Selecting an installation site

When choosing the location of the battery, consider the factors that affect its operation:

- Operating temperature range.

- Permissible humidity level.



Battery power saver mode must be enabled to extend the battery life.



The battery must be installed into the casing of the compatible hub.

Consider the placement recommendations when designing your Ajax system. The security system must be designed and installed by specialists. The list of recommended Ajax partners is [available here](#).

Where the battery cannot be installed

1. In places with high temperature. For example, near heat sources (radiators, heaters, direct sunlight, etc.). High temperature can cause battery overheating, rapid self-discharge, damage to its components, explosion, or fire.
2. In places with high humidity. Moisture can corrode the contacts or cause a short circuit.
3. Near flammable materials. Never place the battery near flammable liquids or materials. Doing so increases the risk of fire or explosion, especially if a short circuit occurs.



The battery capacity depends on its installation position. The side with the cable outlet must face upward – this orientation ensures optimal performance. With such installation, the capacity loss is minimal (up to 10%). If the battery is installed with the cable facing downward, the capacity loss may increase to as much as 25%.

Preparing to install

Before installing Internal battery NB (7.2V/95Ah), ensure it is compatible with the hub. Also, read this manual and the [hub user guide](#).

Cable arrangement

When preparing for cable routing, check the electrical and fire safety regulations in your region. Strictly follow these standards and regulations. Tips for cable arrangement are available in [this article](#).

Cable routing

We recommend you read the [Selecting the installation site](#) section carefully before installation. Avoid deviations from the system project. Violating the basic installation rules and the recommendations of this manual may lead to the device's incorrect operation.



[Learn more](#)

Installation and configuration

Before installation, ensure that you have selected the optimal device location that meets the requirements of this manual.



Only a professional electrician should install the device.

How to install the battery into the casing

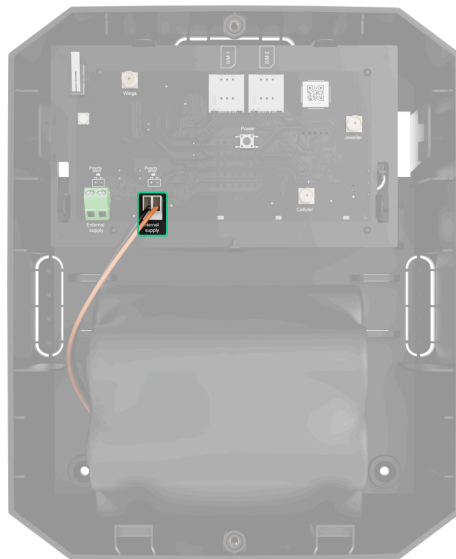


Before installing the battery, read the user manual of the compatible hub. This will help you install the battery correctly and configure the hub settings after installation.

1. Remove the front panel of the hub casing.
2. Identify the internal battery connector on the board (**Internal supply**).
3. Connect the battery to the board connector.

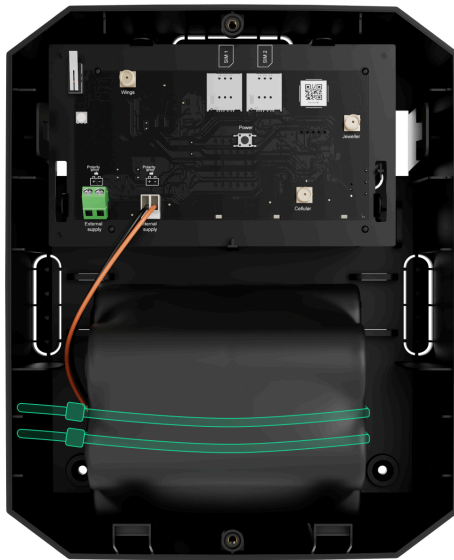


Observe the polarity. If the battery is connected incorrectly, it will not power the hub, and the connector can be damaged.



The battery cable should not lie on or under the hub board, as this can impair communication with the hub.



4. Secure the battery in the casing with ties.

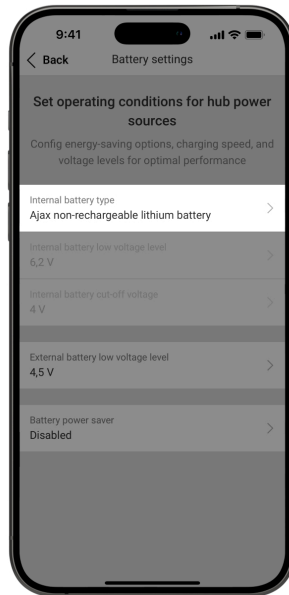


5. Turn on the hub.
6. Close the hub casing.
7. Select the battery type in the hub settings.
8. Check the battery connection state in an Ajax app.

How to configure the battery


After installing the battery, select the correct hub settings:

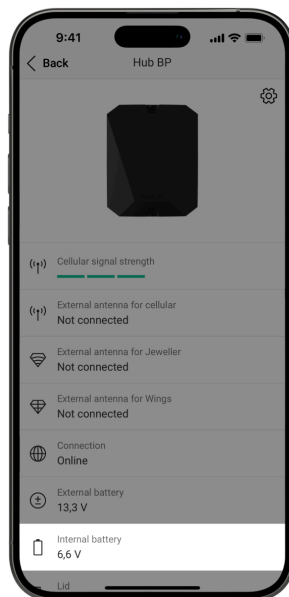
1. Open the Ajax PRO app.
2. Select the space.
3. Go to the **Devices**  tab.
4. Select the hub from the list.
5. Go to its **Settings** .
6. Open the **Service** menu.
7. Open the **Battery settings** menu.
8. Select the **Ajax non-rechargeable lithium battery** option for the **Internal battery type** setting.



States

The hub states include information about the battery connection status. These states can be found in [Ajax apps](#):

1. Go to the **Devices**  tab.
2. Select the hub from the list.



Maintenance

Internal battery NB (7.2V/95Ah) is maintenance-free and non-rechargeable.



If the battery is not used for a long time, it should be stored at a temperature not exceeding +30 °C. This is necessary to reduce battery degradation.

Technical specifications



[All technical specifications](#)



[Compliance with standards](#)

Contacting Technical Support

If the device does not function correctly, please contact Ajax Technical Support first. In most cases, technical issues can be resolved remotely.

- [email](#)
- [Telegram](#)